



# UMACO PRODUCTS

EPOXY SYSTEMS • CONCRETE REPAIR • MASONRY SEALERS

• MEMBRANES • STAINS • URETHANE MORTARS •



• ADMIXTURES • STUCCO • BONDING AGENTS •

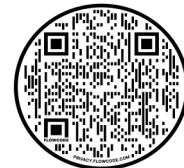
PAVER SEALERS • THIN-STONE MORTARS • WATERPROOFING



[www.umaco.com](http://www.umaco.com)

Toll Free: 800-442-5535

Phone: 978-453-8881



Visit Umaco website by scanning code above

2026



MADE IN  
  
U. S. A.

[www.umaco.com](http://www.umaco.com)

60 Rear Newhall Street  
Lowell, MA 01852  
Toll Free: 800-442-5535  
Phone: 978-453-8881



Since 1965, Umaco has been manufacturing a full line of high-quality concrete patching & repair products, sealers, waterproofing products, thin-stone veneer mortars, decorative coatings and resinous flooring systems.

Our main focus has been to develop innovative, reliable and competitively priced products that will stand the test of time.

Umaco will continue to deliver value to our customers through product performance, availability and superior technical support.

Thank you for your patronage throughout the years and for giving us the opportunity to show you why Umaco truly is "The Professional's Choice"!

## INDEX

Page 4-5	Admixtures, Bonding Agents & Special Additives
Page 5	Grout, Hydraulic-Cement (Plug) and Self-Leveling Cement
Page 6	Patching, Repair and Resurfacing
Page 7	Stucco
Page 7	Thin-Stone Veneer Mortars
Page 8	Surface Preparation & Non-Slip Additive
Page 8	Waterproof Membrane & Crack Isolation
Page 9-10	Clear Sealers & Water Repellents
Page 10	Colored Concrete Sealers
Page 11	Concrete Stain
Page 11	Moisture Vapor Barriers & Epoxy Primers
Page 12	100% Solids Epoxy (Clear & Colored), Epoxy Repair & Cove Gel
Page 13	Self-Leveling Epoxy & Self-Leveling Urethane Cement
Page 13	Polyaspartic & Urethane Topcoats
Page 14	Polyurethane Membrane Deck System & Primers
Page 15	Decorative Resinous Flooring Systems

# ADMIXTURES, BONDING AGENTS & SPECIAL ADDITIVES



## **ADDMIX-21**

A specially formulated combination of polymers & modifiers designed to enhance the properties of cement based mixes. When added to cement-based mixes, Addmix-21 increases flexural, compressive & tensile strengths as well as the adhesive bond.



## **ADDMIX-35**

A more concentrated version of Addmix-21, Addmix-35 is a specially formulated combination of polymers & modifiers designed to enhance the properties of cement based mixes. When added to cement-based mixes, Addmix-35 increases flexural, compressive & tensile strengths as well as the adhesive bond.



## **BOND-ALL**

An exterior/interior grade, water-based, surface bonding agent applied prior to placing new Portland cement based mixes & plaster over masonry, concrete, stone, plaster, drywall, wonder-board, precast concrete, wood, tile & EPS board. May be applied for vertical & horizontal applications.



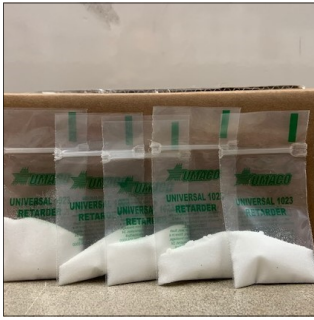
## **COLD CHECK**

A calcium chloride based liquid admixture, designed to accelerate the set time of concrete and mortar mixes in cold weather applications. Cold Check reduces the initial and final set times by as much as two thirds while providing high early strengths.



## **NCA (NON-CHLORIDE ACCELERATOR)**

A non-chloride additive (in dry powder form) designed to accelerate the set time of concrete and mortar mixes while increasing early compressive strength. NCA does not promote steel corrosion or efflorescence and will not disturb color dispersion in colored mortar or concrete.



### **UNIVERSAL 1023 RETARDER**

A special additive (in dry powder form) specifically designed to slow the set time and extend the pot life of Universal 1023. For a slower set time and a longer pot life, add one packet of Universal 1023 Retarder to each 50# bag of Universal 1023 while mixing.



### **UNIVERSAL 1023 PIGMENTS**

Universal 1023 Pigments may be used to integrally color Umaco Universal 1023. Each pigment pack is pre-measured so all you need to do is simply blend one pigment pack with a 50# bag of Universal 1023 Gray in order to achieve the desired color.



Color Chart

## **GROUT, HYDRAULIC-CEMENT (PLUG) & SELF-LEVELING CEMENT**



### **NON-SHRINK GROUT**

A non-shrink, high-strength, non-metallic, cementitious grout formulated to maintain its strengths at both flowable & trowelable consistencies. Grouts machinery & structural supports which require non-shrink performance combined with high strength. Its non-bleeding & non-segregating characteristics at fluid consistencies make it an ideal anchoring cement.



### **U-PLUG**

A fast-setting (3-5 minutes), hydraulic-cement designed to instantly stop running water from seeping through holes & cracks in masonry and concrete. Exhibits excellent adhesion & exceptional structural strength while providing a long lasting permanent repair. Easy to use, just mix with water.



### **SELF-LEVELER 4000**

Self-Leveler 4000 (cement-based) is a single-component, self-leveling, floor resurfacer and underlayment which can be poured or pumped over concrete, terrazzo, ceramic tile and wood flooring from a feather-edge up to 1" in a single pour. Areas to be resurfaced must be primed with Bond-All.

# PATCHING, REPAIR AND RESURFACING

## UNIVERSAL 1023

A multi-purpose, fast-setting, cement-based, fiber-reinforced, polymer-modified, high-strength & water-resistant material which may be used to patch, repair and resurface horizontal, vertical and overhead concrete surfaces. To see all the other ways Universal 1023 can be used, scan code to the right.



Data Sheet



**Resurfaces Spalled & Pitted Concrete**



**Horizontal Patching & Repairs up to 6"**



**Vertical and Overhead Patching & Repairs up to 2"**



**Protects Against Water Seepage & Dampness**



**Crack Resistant Stucco Coat over Masonry & Concrete**



**Basecoat for Stucco, Thin-Brick & Thin-Stone Veneer**



**Edging for Pavers & Stone**



**Bedding Mortar for Stone Treads, Coping and Slate**



**Decorative Coating for Spray Decks and Walls**

# STUCCO



## FINISH-COAT

A 100% acrylic based, aggregate textured stucco applied by trowel over a variety of properly prepared substrates. Finish-Coat is ready to use right out of the pail, just give it a quick mix then apply. Consistent color and texture throughout. Available in a variety of colors & textures.



Color Chart



## STUCCO MESH

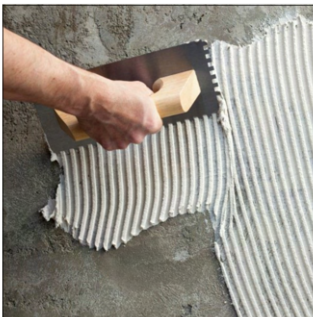
Fiberglass reinforcing mesh consists of 4.5 oz multi-strand, interwoven glass fibers. Fibers are coated with pigmented organic resin polymers to enhance their resistance to attack by alkalinity of mixtures containing Portland cement. Fibers will not rot, mildew or deteriorate. Available in rolls of 38" x 150' and rolls of 9"x150'.

# THIN-STONE VENEER MORTARS



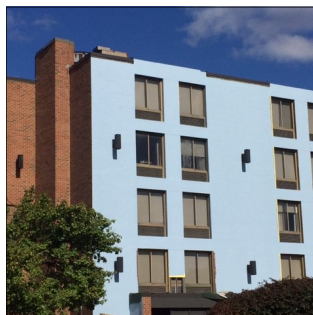
## THIN-STONE VENEER MORTAR

Polymer-modified. Provides optimum bond & exceptional sag resistance when installing a variety of natural thin-stone veneers. Thin-Stone Veneer Mortar is applied by buttering the back-side of each stone then adhering it directly to the properly prepared substrate. Easy to use, just mix with water. Provides a long pot life allowing more working time.



## XTREME-BOND STONE MORTAR

A high-performance, polymer-modified mortar which is applied over the substrate by notched-trowel (similar to tile adhesive). Provides optimum bond & exceptional sag resistance. The ideal product to use when installing thin-stone (with flat & even backsides) over substrates that are flat & even. Easy to use, just mix with water. Provides a long pot life allowing more working time.



## XTREME WEATHER-BLOCK

A high performance, one-component, flexible, polymer based Class III medium vapor permeability air & water-resistive barrier. applied directly to vertical, above-grade wall substrates. May be applied by brush, roller or spray.

## SURFACE PREPARATION & NON-SLIP ADDITIVE



### ULTRA-CLEAN

An environmentally safe, 100% biodegradable solution used to clean concrete, concrete pavers & retaining wall block. Ultra-Clean safely & effectively removes dirt, oil, grease & grime. Helps clean & prepare concrete surfaces prior to the application of protective sealants, coatings and cement overlays. Does not need to be neutralized.



### ULTRA-ETCH

An environmentally safe, organic, 100% biodegradable, non-fuming solution used to lightly etch concrete surfaces prior to the application of protective sealants, coatings and cement overlays. Ultra-Etch can be used in place of harmful acids such as hydrochloric, sulfuric & muriatic acid. Does not need to be neutralized.



### SURE-GRIP

A lightweight, optically clear, micro-polymer additive used to enhance non-slip properties in coatings of all types. When mixed into the wet material, Sure-Grip stays suspended in the material to allow for a uniform texture during coating applications. Available in Fine & Coarse.

## WATERPROOF MEMBRANE & CRACK ISOLATION



### HYDRO-GARD 33

A ready-to-use, solvent-free, flexible, waterproofing and crack-isolation membrane that can be used for a wide variety of applications. Hydro-Gard 33 provides a seamless, monolithic and waterproof membrane which prevents in-plane floor cracks from transmitting through tile or stone. May be tiled over or painted over using Umaco Ultra-Seal 550.



### HYDRO-GARD MEMBRANE FABRIC TAPE

Extremely durable yet flexible making it easy to cut, position and install. Moreover, it does not wrinkle or shrivel over time. Provides a water barrier with optimal thickness that prevents fracturing even if bent at extreme angles. Can be used for crack repairs, underlayment tile, cement board, shower walls, pans, liners and curbs. Available in a 6" x 75' roll.

# CLEAR SEALERS & WATER-REPELLENTS



## **TRANSEAL HIGH-GLOSS (SOLVENT-BASED)**

An exterior-grade (solvent-based), clear, high-gloss, acrylic sealer designed to be applied over concrete pavers, brick, block, concrete, stucco & natural stone. Forms a durable film which provides long lasting protection while enhancing the natural beauty & color of the surface it is applied to. Colored pigment packs available.



Pigment Pack Colors



## **TRANSEAL LOW-GLOSS (SOLVENT-BASED)**

An exterior-grade (solvent-based), clear, low-gloss, acrylic sealer designed to be applied over concrete pavers, brick, block, concrete, stucco & natural stone. Forms a durable film which provides long lasting protection while enhancing the natural beauty & color of the surface it is applied to. Colored pigment packs available.



Pigment Pack Colors



## **TRANSEAL WB (WATER-BASED)**

An interior/exterior grade (water-based), clear, semi-gloss, low-odor, acrylic sealer designed to be applied over concrete pavers, brick, block, concrete, stucco & natural stone. Forms a durable film which provides long lasting protection while enhancing the natural beauty & color of the surface it is applied to.



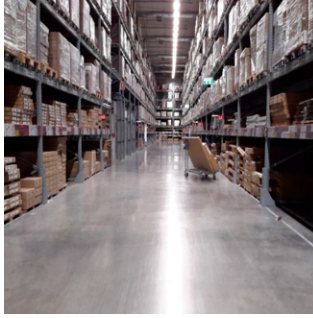
## **SILOXANE (SOLVENT-BASED)**

An exterior-grade (solvent-based), clear, deep-penetrating water repellent designed to be applied over untreated concrete pavers, brick, block, concrete & natural stone. Siloxane is breathable and protects without forming a film or leaving a sheen. Will not darken most substrates (spot test required to determine).



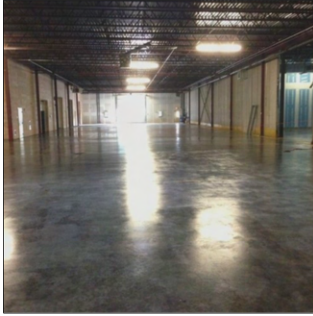
## **SILOXANE WB (WATER-BASED)**

An interior/exterior-grade (water-based), clear, deep-penetrating, low-odor, water repellent designed to be applied over untreated concrete pavers, brick, block, concrete & natural stone. Siloxane WB is breathable and protects without forming a film or leaving a sheen. Will not darken most substrates (spot test required to determine).



### **ULTRA-SEAL 500**

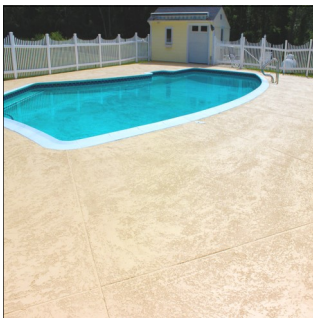
An interior/exterior grade, water-based, clear, high-solids, single-component, acrylic sealer which exhibits excellent adhesion and penetration when applied over new and existing concrete surfaces. Ultra-Seal 550 provides extreme durability even in industrial settings.



### **CONCRETE CURE & SEAL**

An interior/exterior grade, waterborne acrylic emulsion designed to cure, seal, harden and dustproof new or older concrete substrates. When applied after finishing, Concrete Cure & Seal forms a membrane which retains mix water, allowing normal hydration helping to eliminate scaling of concrete.

## **COLORED SEALERS**



### **COLOR-SEAL**

An interior/exterior grade, colored, water-based, water-resistant, acrylic sealer designed to be applied over concrete, brick, block, stucco & concrete pavers. Color-Seal provides excellent adhesion, hot tire resistance and provides long lasting protection. Available in a variety of colors.



Color Chart



### **ULTRA-SEAL 550**

An interior/exterior grade, water-based, colored, high-solids, single-component, acrylic sealer which exhibits excellent adhesion and penetration when applied over new and existing concrete surfaces. Ultra-Seal 550 provides extreme durability even in industrial settings. Available in a variety of colors.



Color Chart



### **ELASTOFLEX**

A 100% acrylic, flexible, stretchable & breathable elastomeric coating designed to waterproof & decorate vertical concrete block, brick, stucco and concrete. Bridges hairline cracks and will stretch and move with the expansion and contraction of the building. Available in a variety of colors.



Color Chart

## CONCRETE STAIN



### ULTRA-STAIN

A water-based, decorative stain which yields a natural appearance when applied to porous mineral based substrates such as concrete floors, pavers and other porous surfaces. Ultra-Stain is a user-friendly alternative to hazardous solvent and acid-based stains.



Color Chart

## MOISTURE VAPOR BARRIERS & EPOXY PRIMERS



### HYDRO-STOP 25

A single-component, permanent, VOC Free, cost effective solution that protects finished flooring, coatings, and adhesives from concrete slabs containing up to 100% relative humidity (calcium chloride readings reaching 25 pounds). May be applied at the time of the concrete pour or over new and existing concrete surfaces (interior/exterior).



### ULTRA-PRIME MVB

A two-component, 100% solids, clear epoxy primer that helps control moisture vapor emissions in concrete slabs up to 25 pounds/24 hours/1000 ft<sup>2</sup>. By blocking moisture, this primer prevents coatings from separating from the concrete substrate.



### ULTRA-PRIME 100

A two-component, clear, water-based, epoxy primer which exhibits excellent characteristics that rival solvent-based primers. This product is chemical and abrasion resistant and it also reduces pinholes, fish-eyes, craters and outgassing of topcoats.



### ULTRA-PRIME 150

A two-component, colored, water-based, epoxy primer which exhibits excellent characteristics that rival solvent-based primers. This product is chemical and abrasion resistant and it also reduces pinholes, fish-eyes, craters and outgassing of topcoats.



Color Chart

## 100% SOLIDS EPOXY



### ULTRA-SHIELD 200

A clear, two-component, 100% solids, epoxy coating which provides a tough, high-gloss finish that combines excellent chemical resistance with superior adhesion. It is non-shrink, highly modified for better UV resistance and low odor. Colored pigment packs available.



Pigment Pack Colors



### ULTRA-SHIELD 250

A colored, two-component, 100% solids, epoxy coating which provides a tough finish that combines excellent chemical and impact resistance. Should be top-coated with Ultra-Guard 300 (polyaspartic) or Ultra-Glaze 400 (urethane) for long term color stability.



Color Chart



### ULTRA-SHIELD 275 (WALLS)

Ultra-Shield 275 is a two-component, 100% solids, colored epoxy coating designed for applications over vertical surfaces at a high-build without sag or slump. May be applied over vertical concrete, concrete block, brick or cement-board up to 12 mils thick.



Color Chart

## EPOXY REPAIR & COVE GEL



### QUICK-FIX 975

Quick-Fix 975 is a fast-setting, two-component, industrial-grade, polymer formulated material designed to be used for patching and repairing of spalled concrete, holes, cracks, thresholds or uneven concrete slabs. Its fast setting formula allows for a quick turnaround and a short down time. Quick-Fix 975 is not recommended for expansion joints.



### ULTRA-COVE 900

Ultra-Cove 900 is a two-component, clear epoxy designed for vertical applications where extra non-sag properties are Required. Ultra-Cove 900 provides a decorative or industrial cove when a seamless floor to wall built system is required. Ultra-Cove 900 can also be used with aggregate for patching concrete floors.

# SELF-LEVELING EPOXY & SELF-LEVELING URETHANE CEMENT



## ULTRA-FLOW 950

A three-part, self-leveling epoxy which may be applied at any thickness. Ultra-Flow 950 cures to a tough, durable and high impact resistant surface. For better abrasion resistance, topcoat with Ultra-Shield 200, Ultra-Guard 300 or Ultra-Glaze 400. Colored pigment packs available.



Pigment Pack Colors



## ULTRA-CRETE 600

A three-part, seamless, self-leveling urethane cement applied up to 1/8" thickness. It can withstand aggressive chemical attack, thermal shock resistance and high impact resistance. Ultra-Crete 600 produces a stand alone, functional & high performance engineered floor. Colored pigment packs available.



Pigment Pack Colors

# POLYASPARTIC & URETHANE TOPCOATS



## ULTRA-GUARD 300

A clear, quick-cure, two-component, high-solids, aliphatic, polyaspartic polyurea which exhibits excellent retention, gloss and UV stability. Provides a tough, chemical & abrasion resistant finish. It's low odor makes it an ideal product for interior applications. Colored pigment packs available



Pigment Pack Colors



## ULTRA-GLAZE 400

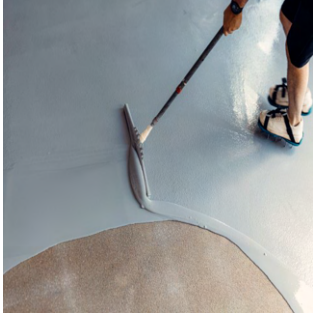
A clear, two-component, waterborne, UV resistant, aliphatic polyurethane which cures to an inert, tough, impact, abrasion and chemical resistant finish coat. Excellent adhesion to concrete, cementitious mortars and epoxies. Available in Gloss and Matte.



## ULTRA-GLAZE 475

A clear, single-component, high-gloss, solvent-borne, moisture cured, UV resistant, aliphatic polyurethane topcoat which cures to a tough, impact, abrasion and chemical resistant finish coat. Provides a long working time with good gloss retention and clarity.

## POLYURETHANE MEMBRANE DECK SYSTEM



### ULTRA-FLEX 700

A two-component, fast-curing, flexible, polyurethane, elastomeric, waterproof membrane applied over concrete in a wide range of temperatures. May be applied at any thickness filling deep joints, cracks & imperfections in a single application. Top-coat with Ultra-Flex 750 or Ultra-Guard 300.



### ULTRA-FLEX 750

A two-component, UV stable, fast-setting, rapid-curing, solvent-free, high-solids, hybrid, aliphatic, polyurea elastomeric membrane applied to interior or exterior concrete, plywood and metal surfaces. An excellent topcoat for Ultra-Flex 700. Available in Dolphin Gray & Tan.

## PRIMERS FOR POLYURETHANE MEMBRANES



### ULTRA-PRIME 125

A two-component, clear, high solids, liquid applied, epoxy-polyamine primer with unique penetrating characteristics applied to concrete and plywood surfaces prior to the application of Ultra-Flex 700 or Ultra-Flex 750



### ULTRA-PRIME 165

A two-component, clear, liquid applied, epoxy-polyamine primer with unique penetrating characteristics when applied over concrete, plywood and metal surfaces prior to the application of Ultra-Flex 700 or Ultra-Flex 750.



### ULTRA-PRIME 175

A two-component, clear, high solids, liquid applied, primer with unique penetrating characteristics used for inter-coat adhesion and a recoat primer for existing urethane systems prior to the application of Ultra-Flex 700 or Ultra-Flex 750.

# DECORATIVE RESINOUS FLOORING SYSTEMS



## COLORED FLAKES

Color Flake systems are renowned for their superior strength, chemical resistance, and seamless finish. With a vast array of available blend options, there is a solution for any space. Color flakes allow complete customization to commercial, residential and industrial floors.



Color Chart



## COLORED QUARTZ

The perfect blend of durability, slip resistance and aesthetic appeal. Colored Quartz systems are engineered to provide a seamless, non-porous surface that is easy to maintain and resistant to chemicals, stains, and abrasions. An ideal solution for a wide range of industrial and commercial applications.



Color Chart

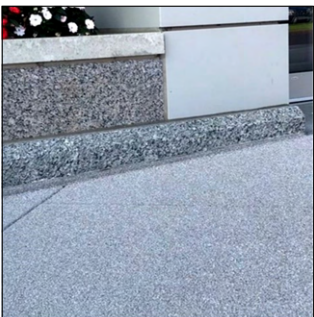


## METALLIC PIGMENTS

Elevate your space with the luxurious and captivating beauty of Metallic Pigment Flooring. These unique colored pigments create pearlescent finishes that add depth and visual interest to any surface.



Color Chart



## GRANITELITE GRANULES

GraniteLite Granules are a perfect blend of beauty and function. The textured design features a realistic granite finish which looks and feels like real granite but at a fraction of the weight and cost.



Color Chart



## SOLID COLORS

Solid color epoxy flooring offers a durable, seamless and cost-effective solution for residential and commercial spaces, featuring superior resistance to chemical spills, abrasions and heavy traffic. Its non-porous surface is easy to clean, while providing a modern, consistent aesthetic with high-gloss or matte,

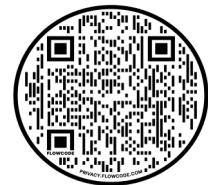


Color Chart

MADE IN  
  
U. S. A.



60 Rear Newhall Street  
Lowell, MA 01852  
Toll Free: 800-442-5535  
Phone: 978-453-8881  
[www.umaco.com](http://www.umaco.com)



Visit Umaco website by  
scanning code above

Brochure 2026, Printed in the USA